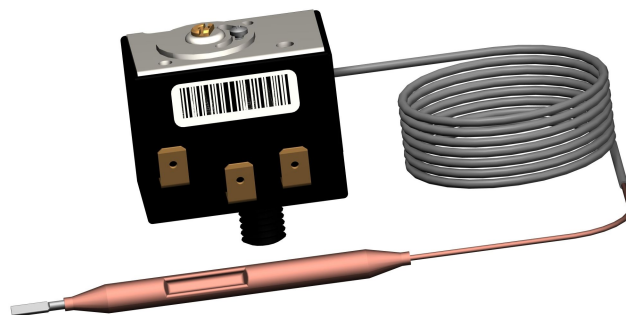


Single-pole



Application

For heat generators with temperatures up to 130°C

Features

Electro-mechanical safety thermal cut-out (STB) with capillary sensor approved to DIN EN 14597 and EN60730-1/2-9

- If cut-out temperature is exceeded, circuit switches to OFF or changeover and stays in this position
- Fail safe design: Expansion liquid loss results in opening of contact 1-2
- Manuell resetting after sensing element has cooled by at least 10K
- Single-pole micro switch with on/off or change-over switch
- Time factor of sensing element better than DIN EN 14597
- Temperature compensated switching head
- Operation type 2B.F.H.K.L.P (EN60730)
- RoHS-conform

Technical data

Switching system:

Endurance class	1.000 operations	
Nominal voltage/current 250 V AC	1-2 16 (3,5) A	1-4 4 (0.6) A
Protection against electric shock	for incorporation in class I equipment I	
Protection standard of housing	IP00 (EN 60 529)	
Overvoltage category	II	

Range of application:

Cut-out temperature	
• fixed adjustment	60 ... 130°C
• adjustable	120...95°C, 130...100°C
Max. sensing element temp.	$t_{aus} + 25K$
Ambiant temperature at switching head	max. 85 °C (T85)
Storage and transport temperature	-25...+60 °C

Calibration:

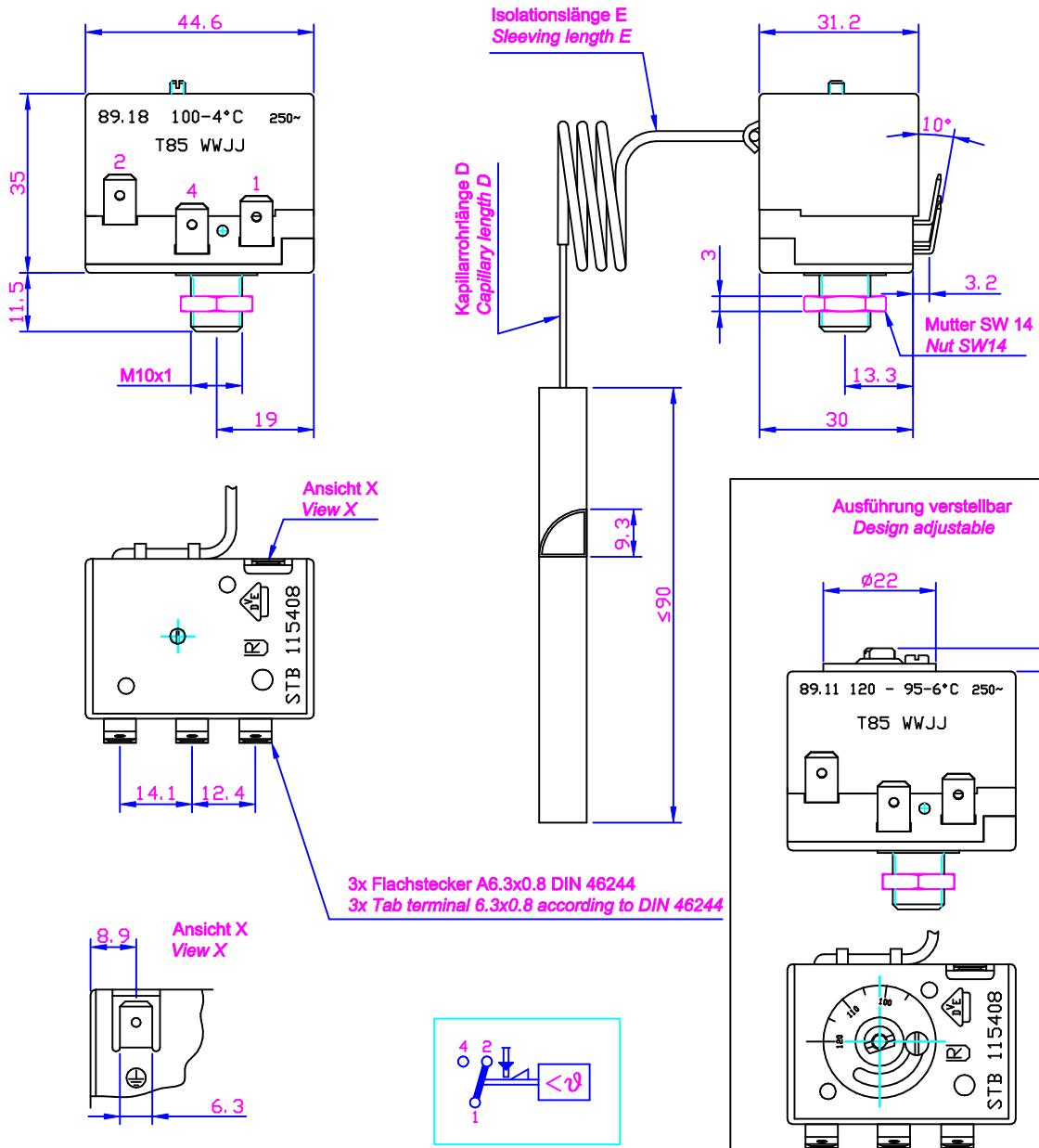
Calibrated for ambient temperature at switching head and capillary tube	50°C (Tu50 according to DIN EN 14597)
Calibration tolerance	- 4 K
Drift	2 K
Time factor in water / in oil	< 45 s / < 60 s

Design:

Capillary und sensing element	copper / stainless steel
Capillary length	500 ... 3500 mm
Phial forms	
• round, diameter	3, 4, 5, 6, 6.5, 7, 8, 9.5, 10, 11, 12 mm
• half-, third-, quater circle	
Diaphragm	stainless steel
Connection and earthing terminals	Tab terminal A6.3x0.8 according to DIN46244, bent or straight

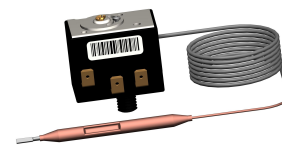
Sicherheits - Temperaturbegrenzer Typ 89.00

Safety thermal cut-out type 89.00



Typ type	Ausschalttemperatur Cut-out temperature	Ausführung Design	* Ausschalttemperatur, Kapillarrohrlänge, Isolationslänge sowie Fühlerformen können nach Kundenwunsch verändert werden. * Cut-out temperature, capillary length, sleeving length and phial forms are adjustable to customers specific requirements.
89.10 89.11	130° C ... 100° C 120° C ... 95° C	verstellbar adjustable	
89.xx	60° C - 130° C*	fest eingestellt fixed adjustment	

INQUIRY



Safety thermal cut-out Type 89

Name: _____ Tel.: _____
Company: _____ Telefax: _____
Address: _____ Date: _____
E-Mail: _____

Please make us an offer free of charge for a thermostat with the following characteristics:

Temperature range: fixed adjusted at _____ °C (60°C – 130°C)
 adjustable 120...95°C
 adjustable 130...100°C

Max. temperatures: phial: _____ °C

Phial material: copper stainless steel

Phial type: round quarter circle third circle half circle
Ø C: _____ mm

Phial length B: _____ mm

Capillary length E: _____ mm

Insulation length D: _____ mm

Accessories: hex nut SW14 safety cap

Required quantity: _____ parts per week month year

Application: _____

Other informations: _____

